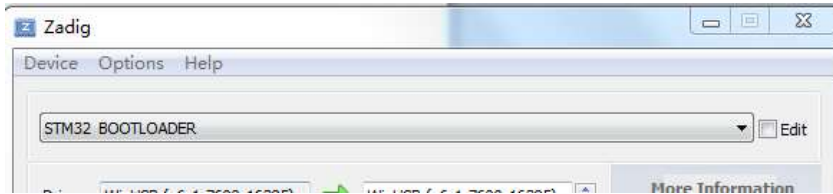
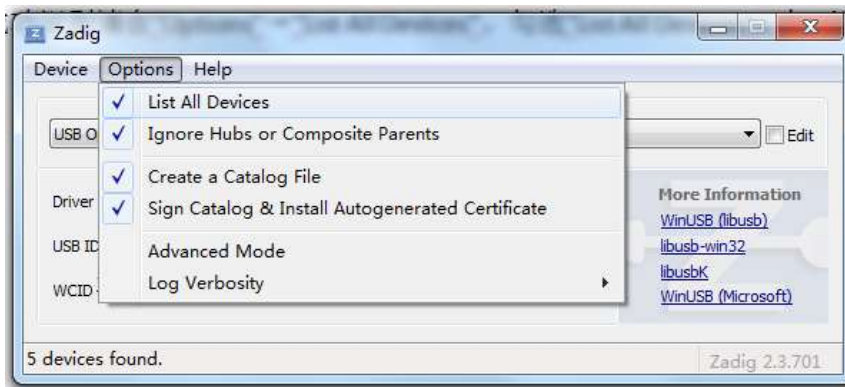


## How to Install OMNIBUS F4 Flight Controller DFU Driver

1. Keep the drone powered off. Hold bind button while plugging in the USB cable to a computer.
2. Open Zadig, if your drone is recognized properly, it should be like this:



If your drone is not recognized, please tick "Options"→"List All Devices",

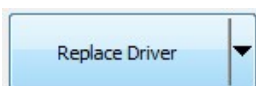


Then choose "STM32 BOOTLOADER"

3. Choose "WinUSB(xxxxx)"



4. Click "replace driver", wait for driver installation.



5. When driver is installed properly, unplug USB cable. Then hold bind button while connect USB cable again. Open Betaflight App and check the top right corner.

If you get "DFU", your drone is ready to connect to Betaflight in DFU mode and flash firmware.



If you don't get "DFU", please get a better USB cable and double check the driver installation.

Some computers have very limited USB power output which making a failed USB connection, in this case, please have a try with main battery connected to your drone.