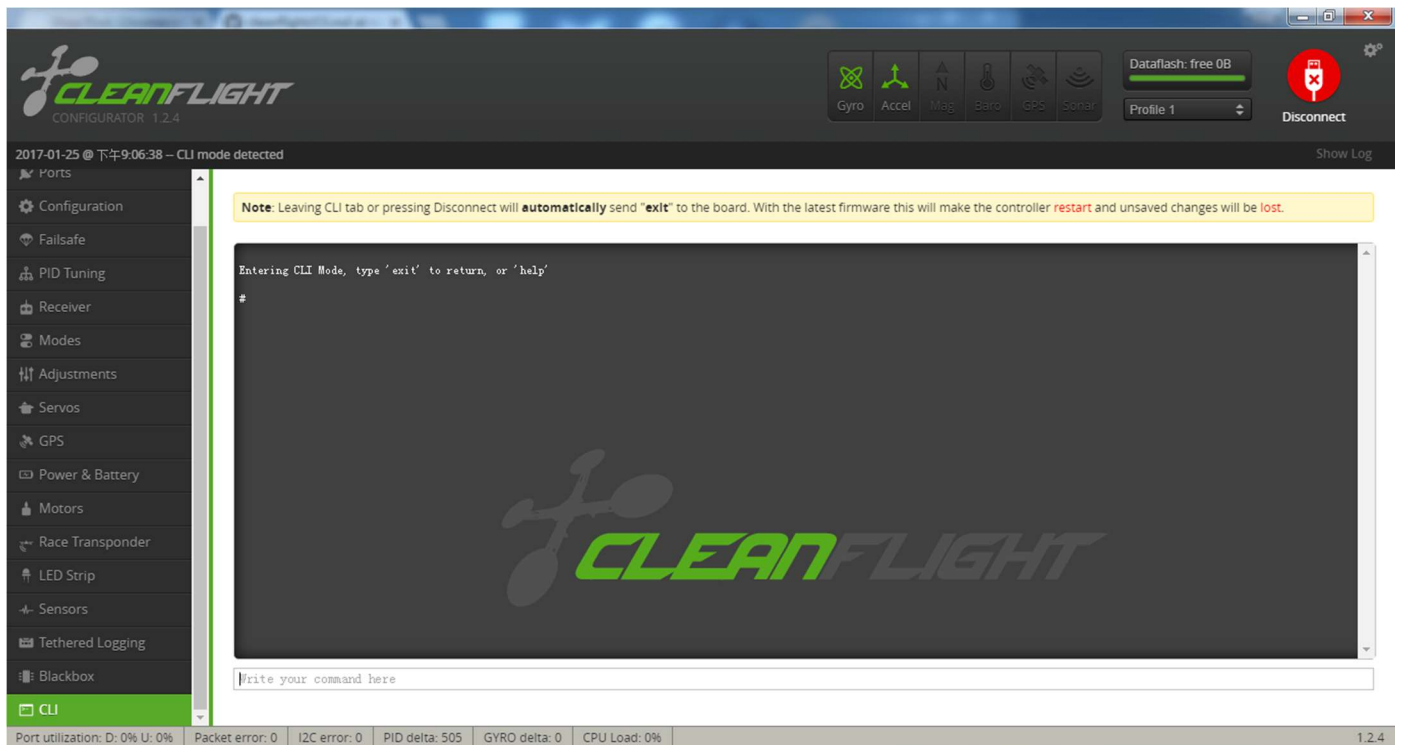
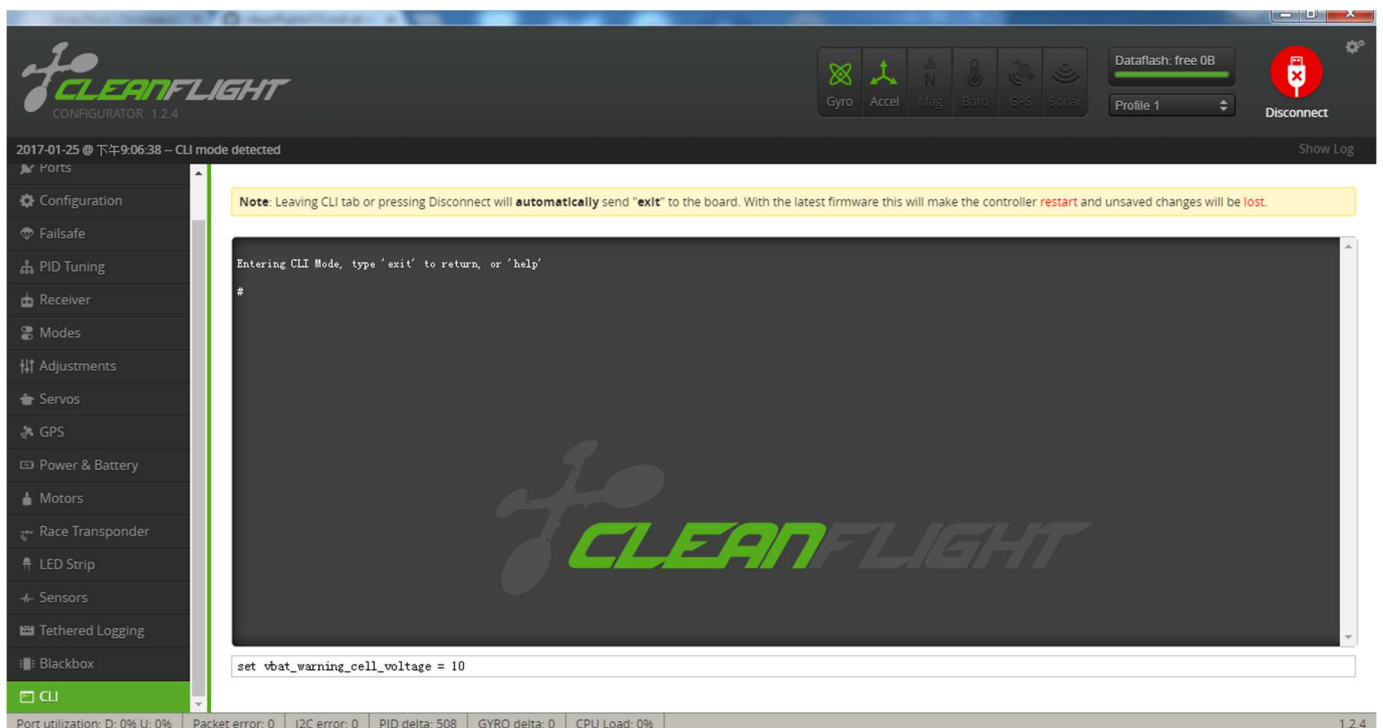


How to Adjust Low Battery Warning

Unplug the battery, plug USB cable, open Cleanflight App and click “Connect” on the up right corner. Click “CLI” on the bottom left corner.



In the command line, please input “set vbat_warning_cell_voltage = 30”. “30” means 3.0 volts per cell. The stock setting is “35”.



Press "Enter".

The screenshot shows the Cleanflight Configurator interface in CLI mode. The top bar includes the Cleanflight logo, version 1.2.4, and various sensor status icons (Gyro, Accel, Mag, Baro, GPS, Sonar). A yellow note at the top states: "Note: Leaving CLI tab or pressing Disconnect will automatically send 'exit' to the board. With the latest firmware this will make the controller restart and unsaved changes will be lost." The main terminal window displays the following text:

```
Entering CLI Mode, type 'exit' to return, or 'help'  
# set vbat_warning_cell_voltage = 10  
vbat_warning_cell_voltage set to 10  
#
```

Below the terminal is a text input field with the placeholder "Write your command here". The bottom status bar shows system metrics: Port utilization: D: 0% U: 0%, Packet error: 0, I2C error: 0, PID delta: 508, GYRO delta: 0, CPU Load: 0%, and version 1.2.4.

Input "save" and press "Enter".

This screenshot is identical to the previous one, but the text input field now contains the command "save". The terminal window still shows the previous configuration commands. The rest of the interface, including the top bar, yellow note, and bottom status bar, remains the same.