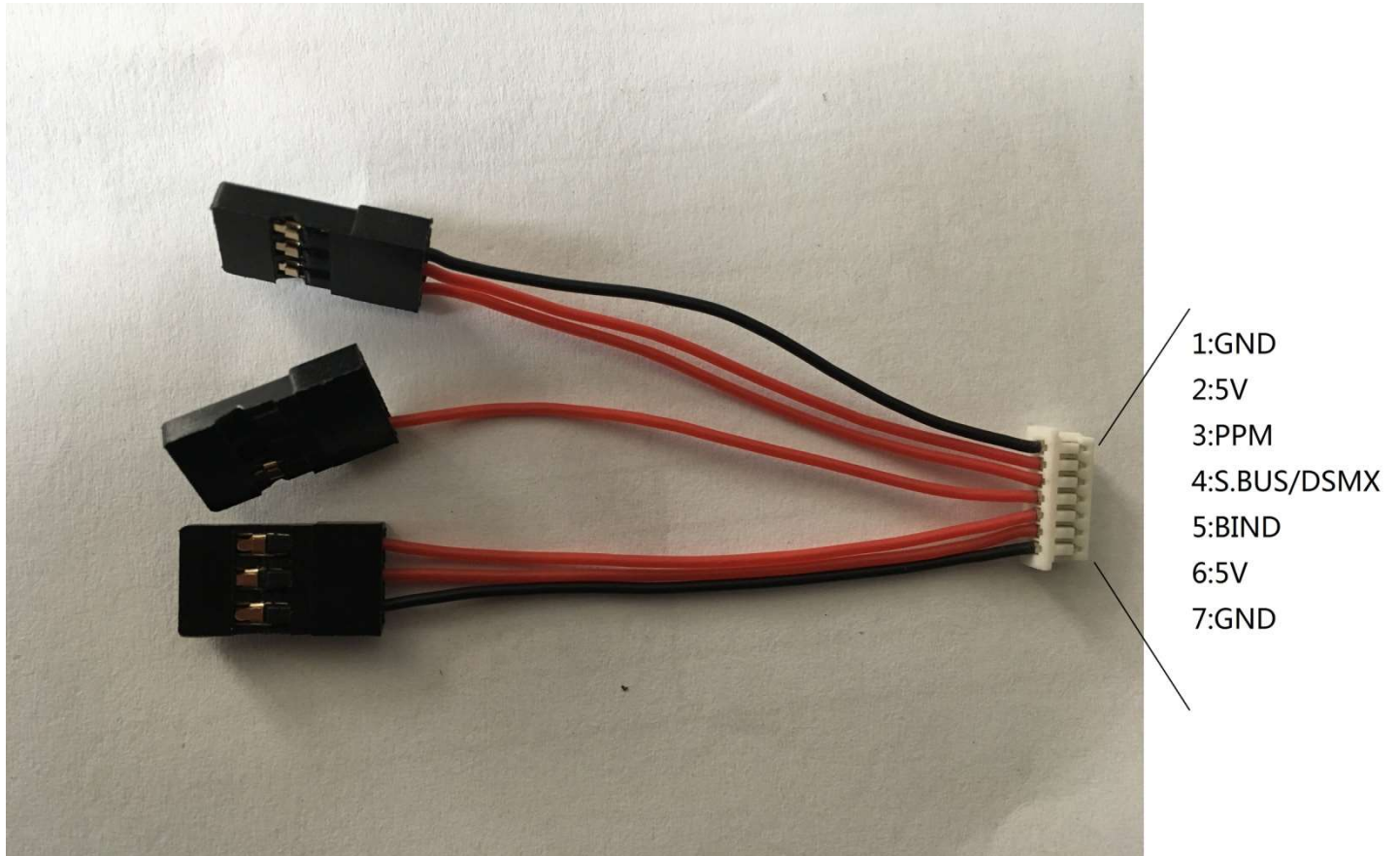


FrSky X8R Receiver for VIFLY R220

The definition of receiver cable:



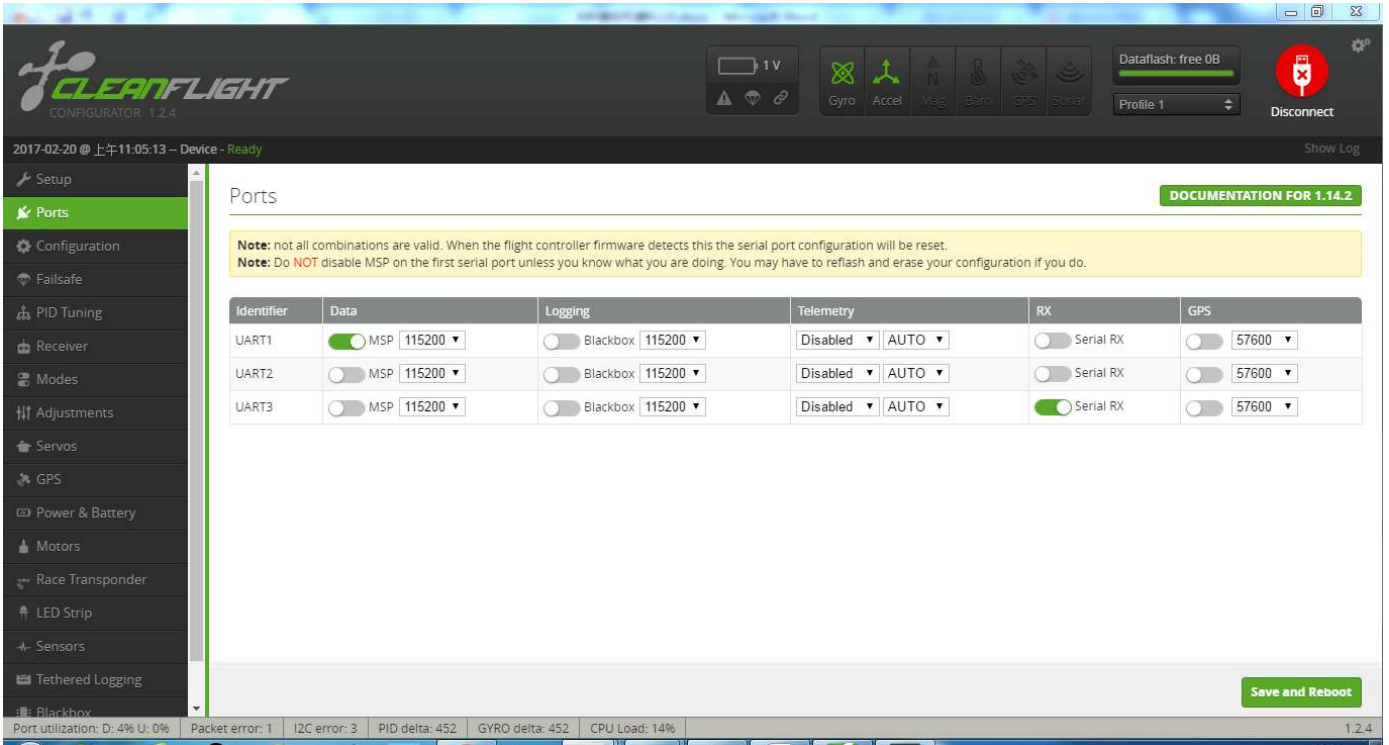
Please bind X8R to the FrSky remote controller first, then plug it to R220.

Plug the middle plug into X8R's SBUS socket.

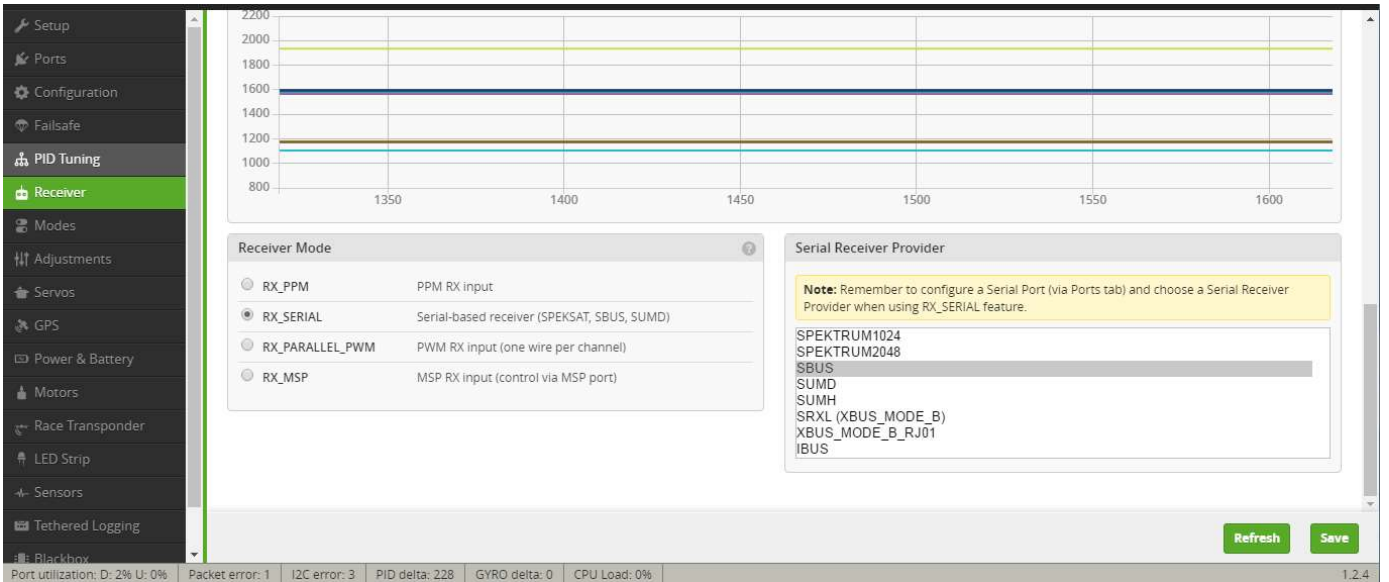
Plug the top plug into X8R's PWM socket.

No need to plug the bottom plug, just fix it with some adhesive tape.

Don't plug the battery, connect R220 to Cleanflight.
 Click "Ports" on the left, turn on "Serial RX" of "UART3".
 Click "Save" on the right bottom.



Click "Receiver" on the left, set "Receiver Mode" to "RX_SERIAL", set "Serial Receiver Provider" to "SBUS".
 Click "Save" on the right bottom.



Make sure all channels are working fine.
Minimum throttle should be around 1000.
Other channels should be around 1500.

